

Water Users Guide

How much water are you using?

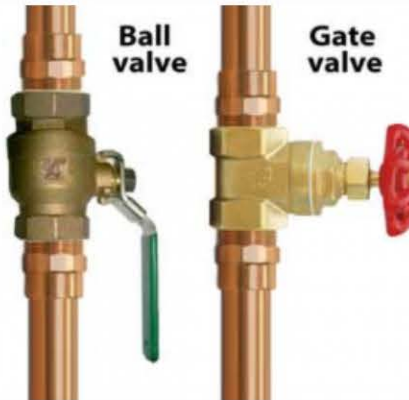
3 Gallons- Flush a Toilet

17 Gallons- 8 Minute Shower

80 Gallons- Fill a Bathtub

4 Gallons- Brush Teeth
(If left running)

1-4 Gallons- Wash Hands



Main Shut Off Valve

Want to know if your toilet has a leak?

1.) Put 10 drops of food coloring into the tank of your toilet
2.) Wait 15 minutes
3.) Look in the bowl, if there is dye you have a leak
4.) Fix the leak immediately!

Water Conservation Tips:

- Turn off the faucet while brushing your teeth
- Only run the washer and dishwasher when it is full
- Install water saving shower heads
- Only water your lawn when it needs it
- Use a broom to clean driveways and sidewalks instead of a hose



How to Read Your Meter

Where is my meter?

Most meters are located in your front yard near the street, usually aligned with your outside spigot.

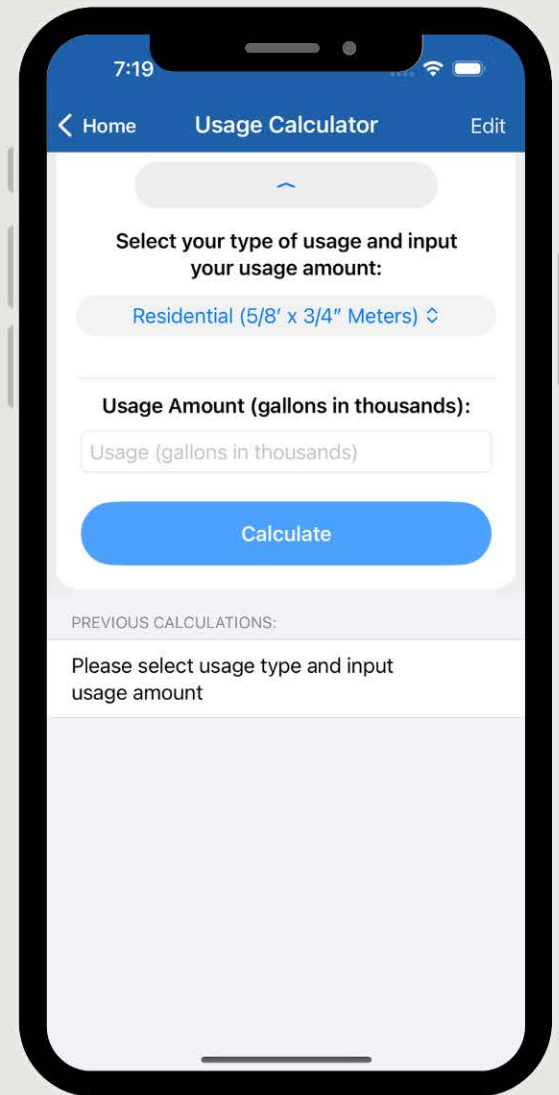
What does my meter box lid look like?

Your meter box lid is either round and iron or square and plastic.



How do I read my meter?

To access the meter, simply lift the small reading lid or gently remove the entire lid. Most meters will have a wire attached to them; be careful not to damage the wire. The meter will read like the odometer in your car. For billing purposes we read your meter in 100 gallon increments, but when checking for a leak, you may need to read additional numbers.



Download our app to use our usage calculator!

